



SCIENTIFIC TECHNICAL SERVICES

IPHES-CERCA

Rates 2023

SCT IPHES FEES

The cost of the services that fit into the casuistry listed below will not be subject to the current rates and will be charged to the projects or budget items associated with the research groups of the center:

- Staff with a contractual relationship with IPHES-CERCA.
- Users who carry out research derived from IPHES-CERCA projects.
- Research or teaching collaboration of external personnel with members of IPHES-CERCA.
- Undergraduate, Master and PhD students of the Universitat Rovira i Virgili, in the context of the IPHES-URV agreement.

Rate A (INTERNAL-CERCA)

Application:

- Users from centers that make up the CERCAGINYS network (<https://qinys.cerca.cat/>).
- Research personnel associated with IPHES-CERCA who work with material linked to external projects.
- Users from other centers with reciprocity agreements.
- Institutions or entities that have co-financed IPHES-CERCA equipment.

Rate B (PUBLIC EXTERNAL)

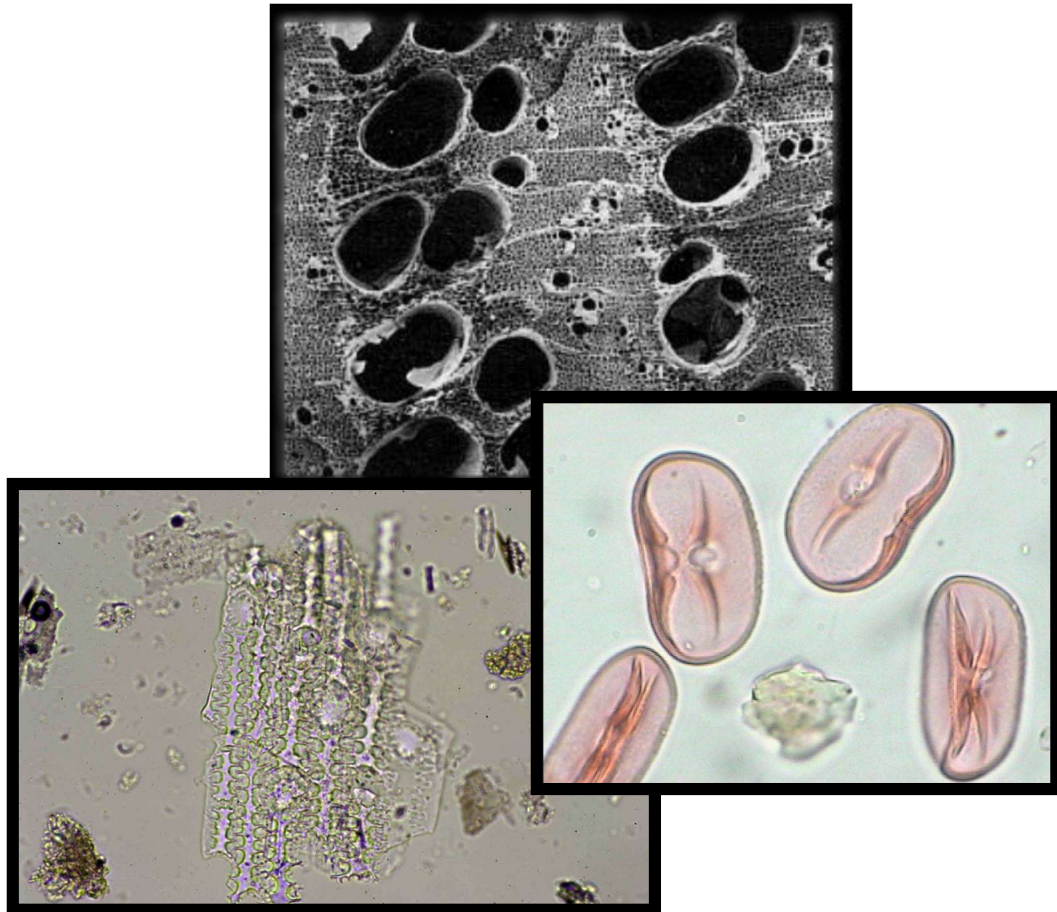
Application:

- Services provided to public institutions such as universities and other public entities.

Rate C (PRIVATE EXTERNAL)

Application:

- Services requested by companies or by any private organization.



ARCHAEOBOTANY

2023

ANTHRACOLOGY

Techniques to apply	Analysis of wood charcoal recovered from archaeological sites
Results to obtain	Identification, enumeration and palaeo-ecological and palaeo-economic significance
Work to be done	<ul style="list-style-type: none"> • Observation under reflected light optical microscopy • Taxonomic identification by comparative anatomy and reference collections

PRICES

SERVICE	RANGES	RATE A IPHES Users and CERCA Centers	RATE B External Public Centers	RATE C External Private Centers
Identification	1h	32,67 €	35,94 €	39,21 €
	2h	65,35 €	71,88 €	78,42 €
	3h	98,02 €	107,82 €	117,63 €
	4h	130,70 €	143,77 €	156,84 €
	5h	163,37 €	179,71 €	196,04 €
Report	1	1.005,36 €	1.105,89 €	1.206,43 €

+ 21% IVA

SPECTROPHOTOMETRY IR

Techniques to apply	Method of analysis based on the absorption, reflection or emission of infrared rays by a substance, phenomena related to interatomic vibrations in molecules or crystals
Results to obtain	Identify mineralogical composition and state of alteration
Work to be done	<p>Instrumentation available:</p> <ul style="list-style-type: none"> - Infrared spectrophotometer-Jasco model 680 plus <p>Applications:</p> <ol style="list-style-type: none"> 1. Inorganic characterisation of soils and habitat or storage structures 2. Characterisation of building materials <p>Sample type: Bulk sediment</p>

PRICES

SERVICE	RATE A IPHES Users and CERCA Centers	RATE B External Public Centers	RATE C External Private Centers
Spectrum / Kinetic hour	27,00 €	30,00 €	33,00 €

+ 21% IVA

PHYTOLITHS

Techniques to apply	Analysis of silicon phytoliths
Results to obtain	Vessel contents, ash analysis, palaeoenvironmental restitution, dietary analysis
Work to be done	<ul style="list-style-type: none"> • Sample preparation: physic-chemical treatments in an appropriate laboratory • Volumetric measurement of the residue • Set-up of petrographic microscopy preparation • Determination and counting under optical microscope • Calculations on the number and types of debris • Preparation of the report

PRICES

SERVICE	RANGES	RATE A IPHES Users and CERCA Centers	RATE B External Public Centers	RATE C External Private Centers
Treatment	1-4 samples	72,73 €	80,00 €	87,27 €
	5-8 samples	145,45 €	160,00 €	174,54 €
	9-12 samples	218,18 €	240,00 €	261,82 €
	13-16 samples	313,29 €	344,61 €	375,94 €
Report	1	1.005,36 €	1.000,52 €	1.091,47 €

+ 21% IVA

PALYNOLOGY

Techniques to apply	Palynological Analysis (Palynology)
Results to obtain	Palaeo-vegetational and palynofacies restitution. Knowledge of the vegetal landscape of the period studied, deduction of the climate, potential forest and agricultural resources, livestock aspects and characterisation of archaeological levels (correlation, archaeo-stratigraphy, genesis of the deposit, etc.).
Work to be done	<ul style="list-style-type: none"> • Sample preparation: physical and chemical treatments for the extraction of the pollen and spores content of the sample. • Volumetric measurement of the residue • Set-up of the biological microscopy preparation • Determination and counting with optical microscopy • Statistical calculations • Preparation of the report

PRICES

SERVICE	RANGES	RATE A IPHES Users and CERCA Centers	RATE B External Public Centers	RATE C External Private Centers
Treatment	1-8 samples	318,93 €	350,82 €	382,71 €
	9-16 samples	637,85 €	701,64 €	765,42 €
	17-24 samples	956,78 €	1.052,45 €	1.148,13 €
	25-32 samples	1.184,58 €	1.303,04 €	1.421,49 €
	33-40 samples	1.480,72 €	1.628,80 €	1.776,87 €
	41-48 samples	1.776,87 €	1.954,56 €	2.132,24 €
	49-56 samples	2.073,01 €	2.280,31 €	2.487,62 €
	57-64 samples	2.369,16 €	2.606,07 €	2.842,99 €
	65-72 samples	2.665,30 €	2.931,83 €	3.198,36 €
	65-72 samples	2.961,45 €	3.257,59 €	3.553,74 €
Report	1	1005,36 €	1.105,89 €	1.206,46 €

- The price for the treatment of more than 72 samples will be provided on request.

+ 21% IVA



GEOARCHAEOLOGY

2023

GEOARCHAEOLOGY

Techniques to apply	<ul style="list-style-type: none"> Petrology of igneous, metamorphic, sedimentary rocks and other inorganic materials (preparation of small raw plates) Soil micromorphology and sedimentary petrography (preparation of large format sheets) of sediments of stratigraphic successions Polishing for microanalysis
Results to obtain	<ul style="list-style-type: none"> * Determine processes and classification of natural and anthropogenic sedimentary microfacies. * Classification of rocks and construction of reference collections
Work to be done	<ul style="list-style-type: none"> Sampling in monoliths (optional) or loose samples in outcrops Sample drying Impregnation of blocks and fabrication of raw plates Preparation of the report

PRICES

SERVICES	RATE A IPHES Users and CERCA Centers			RATE B External Public Centers			RATE C External Private Centers		
	1-3 samples	4-6 samples	7-9 samples**	1-3 samples	4-6 samples	7-9 samples**	1-3 samples	4-6 samples	7-9 samples**
Large block with one polished side	157,85	312,41	403,71	173,64	343,65	444,08	205,21	406,14	524,83
Large block with one polished side (with impregnation and cut)	260,67	599,25	717,13	286,74	659,18	788,84	338,87	779,03	932,27
Small block with one polished side	53,20	77,27	104,71	58,52	85,00	115,18	69,16	100,45	136,13
Small block with one polished side (with impregnation and cut)	145,21	181,88	209,80	159,74	200,07	230,78	188,78	236,45	272,75
Large uncovered raw film	124,93	249,86	375,57	137,42	274,84	413,12	162,41	324,82	488,24
Large uncovered raw film (with optional polish)	142,24	284,48	427,49	156,46	312,92	470,24	184,91	369,82	555,74
Large thin plate covered	145,71	291,42	437,91	160,28	320,56	481,70	189,42	378,85	569,28
Small thin plate non covered	114,18	125,11	149,01	125,60	137,62	163,91	148,44	162,64	193,72
Small thin plate non covered (with optional polish)	66,18	103,23	143,66	72,80	113,56	158,02	86,04	134,20	186,75
Small thin plate covered	77,88	111,03	147,56	85,67	122,14	162,31	101,25	144,34	191,82
Specific studies and report writing **	1.856,39			2.042,03			2.413,31		
Sample extraction	207,71	207,71	225,26	228,48	228,48	247,78	270,02	270,02	292,84

** For a larger number of samples please contact us

+ 21% IVA



MULTI-SCALE MICROSCOPY FOR ARCHAEOLOGY

2023

CONFOCAL MICROSCOPY

Service	<ul style="list-style-type: none"> • Sample observation in a confocal microscope. • Obtaining confocal microscopy images (single and stitching) and 3D. plux files. • Obtaining ISO variables. • Obtaining measurements (profiles, distances, etc..).
----------------	---

PRICES

SERVICE	UNITS	RATE A IPHES Users and CERCA Centres	RATE B External Public Centres	RATE C External Private Centres
Microscope confocal with technic	€/hour	73,76 €	81,68 €	99,15 €
Microscope confocal self-service	€/hour	47,80 €	53,12 €	65,40 €

+ 21% IVA

Users booking a service **for the first time** are required to include a **minimum** of one hour of technician time in the service.

3D DIGITAL MICROSCOPY: Hirox KH-8700

Service	<ul style="list-style-type: none"> • Observation of samples in a 3D digital microscope. • Obtaining 3D digital microscopy images (single and stitching). • Obtaining 3D files. • Obtaining measurements (profiles, distances, etc..)
----------------	--

PRICES

SERVICE	UNITS	RATE A IPHES Users and CERCA Centres	RATE B External Public Centres	RATE C External Private Centres
Microscope HiroxKH-8700 with technic	€/hour	37,21 €	41,06 €	49,75 €
Microscope HiroxKH-8700 self-service	€/hour	11,25 €	12,50 €	16,00 €

+ 21% IVA

Users booking a service **for the first time** are required to include a **minimum** of one hour of technician time in the service.

OPTICAL MICROSCOPY: Zeiss Axio Scope.A1

Servei	<ul style="list-style-type: none"> • Observation of samples in an optical microscope of reflected light. • Brightfield, darkfield, C-DIC (Circular Differential Interference Contrast). Metallographic. • Specialized software for assembling photographs.
---------------	---

PRICES

SERVICE	UNITS	RATE A IPHES Users and CERCA Centres	RATE B External Public Centres	RATE C External Private Centres
Microscope Zeiss Axio Scope.A1 with technic	€/hour	31,21 €	34,40 €	40,41 €
Microscope Zeiss Axio Scope.A1 self-service	€/hour	5,25 €	5,84 €	6,66 €

+ 21% IVA

Users booking a service **for the first time** are required to include a **minimum** of one hour of technician time in the service.

SUMMARY OF MICROSCOPY RATES IPHES 2023

SERVICE	UNITS	RATE A IPHES Users and CERCA Centres	RATE B External Public Centres	RATE C External Private Centres
Microscope confocal with technic	€/hour	73,76 €	81,68 €	99,15 €
Microscope confocal self-service	€/hour	47,80 €	53,12 €	65,40 €
Microscope Hirox KH-8700 with technic	€/hour	37,21 €	41,06 €	49,75 €
Microscope Hirox KH-8700 self-service	€/hour	11,25 €	12,50 €	16,00 €
Microscope Zeiss Axio Scope.A1 with technic	€/hour	31,21 €	34,40 €	40,41 €
Microscope Zeiss Axio Scope.A1 self-service	€/hour	5,25 €	5,84 €	6,66 €

+ 21% IVA

Users booking a service **for the first time** are required to include a **minimum** of one hour of technician time in the service.